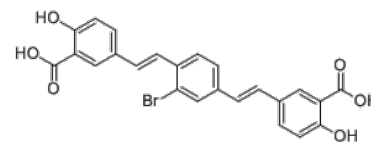


Product Name : Senile plaques (SPs) probe BSB
Cat. No. : PC-38734
CAS No. : 291766-06-8
Molecular Formula : C₂₄H₁₇BrO₆
Molecular Weight : 481.298
Target : Amyloids
Solubility : 10 mM in DMSO



Biological Activity

Senile plaques (SPs) probe BSB is a chemical probe that can detect accumulation of **Aβ** in senile plaques (SPs) in vivo, exhibits high binding affinity for **Aβ aggregates** in vitro (K_i=0.4 μM).

BSB specifically labels SPs in postmortem AD brain sections with excellent fluorescent properties (λ_{ab} = 340 nm; λ_{em} = 520 nm) and lipophilicity.

BSB effectively labels Aβ aggregates in vivo.

BSB shows potential as an antemortem diagnostic for Alzheimer's disease (AD).

References

D M Skovronsky, et al. *Proc Natl Acad Sci U S A*. 2000 Jun 20;97(13):7609-14.

Caution: Product has not been fully validated for medical applications. Lab Use Only!

E-mail: tech@probechem.com